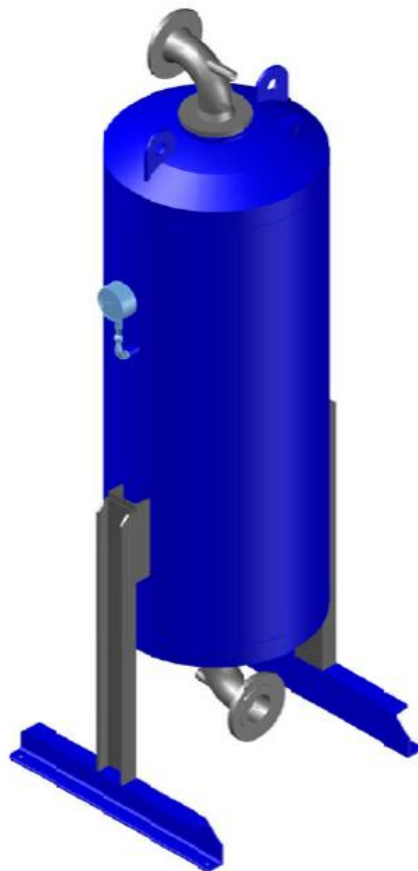


## Installation and operation manual

### Active Carbon Adsorber without dust filter **CLEARPOINT® L 1000 - L8200 V**



---

Dear customer,

Thank you for deciding in favour of the **CLEARPOINT® V** activated-carbon adsorber. Please read these installation and operating instructions carefully before mounting and starting up the **CLEARPOINT® V** activated-carbon adsorber and follow our directions. Perfect functioning of the activated-carbon adsorber can only be guaranteed when the provisions and notes stipulated here are strictly adhered to.

1 Type plate CLEARPOINT® V activated-carbon adsorber

**BEKO TECHNOLOGIES GMBH**

Im Taubental 7  
D-41468 Neuss  
Germany  
Tel.: +49 (0) 2131 – 988-0  
Fax: +49 (0) 2131 – 988-900  
beko@beko-technologies.com



**CLEARPOINT®**

Baujahr Year of manufacture Année de fabrication	<input type="text"/>
Typ Type Type	<input type="text"/>
Seriennummer Serial no. N° de série	<input type="text"/>
Max. zul. Betr.druck PS Max. Inlet press. PS Pression de service PS	<input type="text"/>
Min/Max zul. Temp TS Min/Max Temp. TS Min/Max Température TS	<input type="text"/>
Eintrittstemperatur Inlet temperature Temp. d'entrée	<input type="text"/>
Betriebsdruck Operating pressure Pression de service	<input type="text"/>
Max. Volumenstrom Max. volume flow Débit max. à l'entrée	<input type="text"/>
Prüfzeichen Baugruppe Test certificate assembly Certific. de test assemblage	CE 0525
Servicekontakt Service contact Contact service	<input type="text"/>

**MADE IN GERMANY**  
**www.beko-technologies.com**

Please enter the data from the type plate of the activated-carbon adsorber here!

## Contents

---

### 2 Contents

1	Type plate CLEARPOINT® V activated-carbon adsorber .....	3
2	Contents .....	4
3	General advice .....	6
4	Safety instructions .....	7
4.1	Safety labelling .....	7
4.1.1	Safety pictograms in accordance with DIN 4844 .....	7
4.1.2	Signal words in accordance with ANSI .....	8
4.2	General safety instructions .....	9
4.3	Special advice for plants under pressure in accordance with the 2014/68/EC Pressure Equipment Directive.....	13
5	Residual risk.....	14
6	Field of application and proper use of the CLEARPOINT® V activated-carbon adsorber.....	14
7	Applied EU directives and harmonised standards .....	15
8	General description of the CLEARPOINT® V activated-carbon adsorber.....	16
9	Operating principle .....	17
10	Technical data .....	18
10.1	Technical data CLEARPOINT® L 1000-8200 V .....	18
10.2	Available options .....	20
10.3	Filter selection table .....	21
11	Description of the components.....	22
12	Transport and set-up .....	23
12.1	Safety during transport and set-up.....	23
12.2	Transport .....	23
12.3	Set-up .....	24
13	Installation .....	25
13.1	Safety during the installation .....	25
13.2	Minimum requirements.....	27
13.2.1	Filtration of the compressed air .....	27
13.2.2	Water content of the compressed air .....	27
13.2.3	Inlet temperature of the compressed air .....	27
13.3	Installation examples.....	28
13.3.1	Installation diagram CLEARPOINT® V with a refrigeration dryer.....	28
13.3.2	Installation diagram CLEARPOINT® V with an adsorption dryer .....	29
13.4	Work steps during the installation .....	30
14	Start-up.....	31
14.1	Safety during the start-up .....	31
14.2	Check prior to the start-up.....	32
14.3	Initial start-up .....	33
14.4	Restart .....	34
14.5	Removal from service.....	34
15	Troubleshooting and fault elimination .....	35
15.1	Safety during troubleshooting and fault elimination .....	35
15.2	Status and alarm indications .....	37
16	Maintenance.....	39
16.1	Safety during maintenance.....	39

16.2	Maintenance in general .....	41
16.3	Maintenance of the CLEARPOINT® V activated-carbon adsorber .....	41
16.3.1	Replacement of the activated carbon.....	42
16.4	Periodic inspections .....	44
17	Dismantling and disposal .....	45
18	List of spare parts.....	46
19	EC Declaration of Conformity.....	47

### 3 General advice



Prior to starting up the **CLEARPOINT® V** activated carbon adsorber, it must be ensured that the operating staff are instructed and skilled according to these instructions for installation and operation with regard to the set-up, monitoring, operation and maintenance of the plant, as well as to the safety measures to be observed.

The operating instructions must be accessible at all times at the place of application of the device.

Non-observance of the installation and operating instructions involves risks for persons and systems.

If you have any queries regarding these instructions, please contact **BEKO TECHNOLOGIES**.

### 4 Safety instructions

#### 4.1 Safety labelling

Safety instructions whose non-observance represents a threat to life and physical condition or can lead to property damage are labelled in accordance with DIN 4844 and ANSI Z535.

##### 4.1.1 Safety pictograms in accordance with DIN 4844



General danger symbol



Quickly escaping compressed air



Note



Observe operating instructions



Use eye protection



Wear light breathing protection



Use protective gloves



Wear ear protectors

## Safety instructions

---

### 4.1.2 Signal words in accordance with ANSI

<b>Danger!</b>	Imminent hazard Consequences of non-observance: serious injury or death
<b>Warning!</b>	Potential hazard Consequences of non-observance: possible serious injury or death
<b>Caution!</b>	Imminent hazard Consequences of non-observance: possibly injury or property damage
<b>Notice!</b>	Potential hazard Consequences of non-observance: possibly injury or property damage
<b>Important!</b>	Additional advice, info, hints Consequences of non-observance: disadvantages during operation and maintenance, no danger

## 4.2 General safety instructions



Installation works must exclusively be carried out by authorised and qualified skilled personnel. Prior to undertaking any measures on the **CLEARPOINT® V**, the skilled personnel shall read up on the device by carefully studying the operating instructions. The operator is responsible for the adherence to these provisions. The respective directives in force apply to the qualification and expertise of the skilled personnel.

For safe operation, the device must only be installed and operated in accordance with the indications in the operating instructions. In addition, the national and operational statutory provisions and safety regulations, as well as the accident prevention regulations required for the respective case of application, need to be observed during employment. This applies accordingly when accessories are used.



**Danger!**

**Compressed air!**

**Risk of serious injury or death through contact with quickly or suddenly escaping compressed air or through bursting and/or unsecured plant components.**



All types of installation, maintenance and repair works must only be carried out when the **CLEARPOINT® V** is pressureless.

It is the operator's duty to ensure that the connected pressure generator is secured against exceeding of the maximum operating overpressure and the temperature limits at the **CLEARPOINT® V**.

The max. permissible operating parameters, such as the operating overpressure, temperature and volume flow must not be exceeded. The max. permissible operating parameters are specified on the type plate and in the technical data (see "Technical data" section).

The operator must ensure through the installation of suitable safety devices that the safety-relevant operating factors (pressure, temperature, flow) are not exceeded.

Pressure relief valves used need to be arranged in such a manner that endangering of persons is excluded. Where required, observe the manufacturer's additional advice. Suitable and permissible arming devices need to be provided in accordance with the local regulations.

Never make structural modifications to the plant!

Use suitable tools and genuine spare parts and accessories only!

Only use fittings and connecting elements that are approved for this application. It is of vital importance to observe the specifications of the respective manufacturer. Ensure that the connections are installed according to good professional practice.

Only use pipes, valves and fittings which are suitable for the pressure and temperature range. It is of vital importance to observe the specifications of the manufacturer.

Sudden impact through pressure build-up can cause damage and escape of compressed air. Avoid a sudden pressure build-up by operating the valves slowly.

Check all pipe connections subsequent to the installation and retighten them if necessary!

The general safety and accident prevention regulations apply!

Prior to the start-up, a leak test needs to be carried out. This test shall only be effected by correspondingly qualified skilled personnel in compliance with the safety regulations.

## Safety instructions

---



### Caution!

#### Unauthorised intervention!

**Unauthorised interventions may endanger persons and plants and lead to malfunction.**

Unauthorised interventions, modification and abuse of the pressure device are prohibited.

Operators of the devices must observe the local and national pressure equipment regulations in the country of installation.



### Danger!

#### High pressure!

**Subsequent to the start-up, components of the plant are under pressure.**

**Risk of serious injury or death through contact with quickly or suddenly escaping compressed air or through bursting and/or unsecured plant components.**

Any installation, repair and maintenance works must only be carried out when the plant is disconnected, pressureless and de-energised.



### Warning!

#### Improper use and application!

**Improper use and application can lead to injury and damage to plants.**

The following use is considered improper and is therefore prohibited:

- Exceeding the max. permissible operating pressure
- Exceeding the max. permissible operating temperature
- Exceeding the max. permissible volume flow
- All individual cases of application which are described as improper



### Caution!

#### Improper transport!

**Improper transport can lead to injury and damage to plants.**

The **CLEARPOINT® V** must only be transported and installed by qualified and authorised skilled personnel.

Only use suitable and technically unobjectionable lifting tools!

Only use lifting tools with a sufficient carrying capacity!

The respective national regulations and directives in force must be adhered to. Otherwise, personal injuries may occur.



### NOTE!

#### Damage through defective components!

Under no circumstances should you start up a damaged **CLEARPOINT® V**. Defective components can impair the operational reliability and cause further damage.



### Caution!

#### Incorrect installation!

Incorrect installation of the **CLEARPOINT® V** may endanger persons.

Ensure that the personnel in charge of the installation of the **CLEARPOINT® V** are sufficiently instructed and competent for this task.



### **Danger!**

#### **Incorrect start-up!**

The incorrect start-up of the **CLEARPOINT® V** may endanger persons.

Prior to starting up the **CLEARPOINT® V**, it must be ensured that the operating staff are instructed according to these instructions for installation and operation with regard to the set-up, monitoring, operation and maintenance of the plant, as well as to the safety measures to be observed.



### **CAUTION!**

#### **Operational reliability at risk!**

Overloading the **CLEARPOINT® V** can compromise the operational reliability!

Observe the permissible temperature range!

Do not exceed the permissible volume flow!



### **NOTE!**

#### **Operational reliability at risk!**

Incorrect installation can compromise the operational reliability and affect service measures.

The clear diameter of the pipe joint must be at least as large as the mounting dimension of the **CLEARPOINT® V**.

It is strongly recommended to install a shut-off valve both upstream and downstream of the **CLEARPOINT® V** for the implementation of service measures.

To maintain the supply of compressed air during service failures, maintenance and repair works on the **CLEARPOINT® V**, the installation of a bypass line around the **CLEARPOINT® V** is advisable. This bypass line must have a shut-off valve.



### **Danger!**

#### **Mishandling!**

Mishandling of the **CLEARPOINT® V** may endanger persons.

Prior to starting up the **CLEARPOINT® V**, it must be ensured that the operating staff are instructed according to these instructions for installation and operation with regard to the set-up, monitoring, operation and maintenance of the plant, as well as to the safety measures to be observed.

## Safety instructions

---



### **Danger!**

#### **Incorrect maintenance!**

The incorrect maintenance of the **CLEARPOINT® V** may endanger persons.

Ensure that the personnel in charge of the operation, monitoring and maintenance of the **CLEARPOINT® V** are sufficiently instructed and competent for this task.



### **Caution!**

#### **Activated-carbon dust!**

**Eyes and respiration are endangered through quickly or suddenly escaping activated-carbon dust.**



Activated carbon can produce dust and wear debris!

Use eye protection!



During the start-up of the activated-carbon adsorber, compressed air might escape and cause a very loud expansion noise. Wear silencing ear protectors.

Wear personal protective clothing!



Wear light breathing protection at strong dust development!



### **Caution!**

#### **Activated carbon produces dust and wear debris!**

**Endangering through dust explosion.**

Use suitable tools and ex-protection-tested suction plants and accessories. Observe the safety instructions.

### 4.3 Special advice for plants under pressure in accordance with the 2014/68/EC Pressure Equipment Directive

The **CLEARPOINT® V** activated-carbon adsorber is a pressure device in the sense of the 2014/68/EC Pressure Equipment Directive. Therefore, the plant needs to be registered with the supervisory authority in accordance with the local regulations, and requires the approval of the latter.

For the examination prior to the start-up and for periodic inspections, the national regulations need to be observed, such as the industrial safety regulation in the Federal Republic of Germany. In countries outside the EU, the respective regulations in force there need to be adhered to.

The proper use of pressure devices is the basic requirement for safe operation. As regards pressure devices, the following needs to be observed:

- The **CLEARPOINT® V** must only be employed within the pressure and temperature range limits indicated by the manufacturer on the type plate.
- No welding must be carried out on the pressure vessel of the device.
- The **CLEARPOINT® V** must neither be installed in insufficiently ventilated rooms nor near heat sources or inflammable substances.
- To avoid fractures resulting from material fatigue, the **CLEARPOINT® V** should not be exposed to vibrations during operation.
- The maximum operating pressure indicated by the manufacturer on the type plate must not be exceeded. It is the operator's responsibility to install the appropriate safety and control devices. Prior to the start-up of the **CLEARPOINT® V**, the connected pressure generator (compressor etc.) must be safeguarded against exceeding of the max. permissible operating pressure. The integrated safeguard needs to be checked by an approved inspection agency.
- The documents related to the **CLEARPOINT® V** (manual, operating instructions, manufacturer's declaration etc.) must be kept safe for future reference.
- No objects whatsoever must be installed or placed on the **CLEARPOINT® V** and the connecting lines.
- Installation of the plant in frost-free places only.



#### **WARNING!**

##### **Unauthorised intervention!**

Unauthorised interventions may endanger persons and plants and lead to malfunction.

Unauthorised interventions, modification and abuse of the pressure devices are prohibited.

Operators of the devices must observe the local and national pressure equipment regulations in the country of installation.



Warning!

##### **High pressure!**

Subsequent of the start-up of the **CLEARPOINT® V** components of the plant are under pressure. Serious injuries are possible.

Any installation, repair and maintenance works on the **CLEARPOINT® V** must only be carried out when the plant is pressureless.

### 5 Residual risk

The plant offers state-of-the-art technology. However, certain residual risks remain.

- Risk through disregard of the safety instructions.

The safety instructions included in these operating instructions point to further residual risks. It is, therefore, of vital importance to observe all safety instructions.

### 6 Field of application and proper use of the CLEARPOINT® V activated-carbon adsorber

These operating instructions apply exclusively to the tank variants of the **CLEARPOINT® L 1000 V bis L 8200 V** activated-carbon adsorbers from **BEKO TECHNOLOGIES** and refer to the device type without dust filter and internal tubing.

The **CLEARPOINT® V** activated-carbon adsorber must only be applied under the conditions described in this user manual, and only in connection with the components recommended or approved by the manufacturer.

The field of application comprises the reduction of oil vapours and odorous substances from compressed air or nitrogen. The system is intended for the use under industrial conditions inside buildings.

Any other use is considered improper. The manufacturer shall not be liable for problems occurring as a consequence of improper use. The operator alone is responsible for any hazard resulting from that.



Please check, prior to reading the operating instructions, whether or not these instructions correspond to the device.

Read these installation and operating instructions carefully prior to any intervention regarding the **CLEARPOINT® V**.

The operating instructions must be accessible at all times at the place of application of the device.

If you have any queries regarding these instructions, please contact **BEKO TECHNOLOGIES**.



To ensure safe operation, the device must only be operated and maintained in accordance with the indications in the operating instructions. In addition, the national and operational statutory provisions and safety regulations, as well as the accident prevention regulations required for the respective case of application, need to be observed during employment. This applies accordingly when accessories are used.

Non-observance of the installation and operating instructions involves risks for persons and systems.

Proper functioning and trouble-free operation of the activated-carbon adsorber is only ensured when the transport, storage, set-up, installation, operation and maintenance are carried out in accordance with the advice included in this user manual.

To handle the plant, the personnel must be trained to deal with devices of the compressed-air technology and need to know the contents of this user manual as far as handling is concerned.

To start up and maintain the plant, the personnel must be familiar with the safety concepts of the compressed-air technology. The personnel must be authorised and trained in such a manner that they are capable of starting up and maintaining such facilities.

The proper employment and use of the **CLEARPOINT® V** according to the directions requires the exact compliance with the installation instructions, in particular in respect of:

- The place of installation, installation conditions
- The pressure and temperature of the inlet air
- The ambient temperature

The device is supplied as accepted in the factory. The operator only needs to establish the connections with the compressed-air system, which is described in the following chapters.



### **WARNING!**

#### **Improper use!**

The following is considered as improper use and is prohibited:

- Exceeding the max. permissible operating pressure
- Exceeding the max. permissible operating temperature
- Exceeding the max. permissible volume flow
- Employment of the **CLEARPOINT® V** in hazardous areas
- All individual cases of application which are not described as proper use

## **7 Applied EU directives and harmonised standards**

### **Applied EU directives:**

**2014/68/EC**                      Pressure Equipment Directive

### **Harmonised standards applied:**

**EN 10216-2:**                      Seamless steel tubes for pressure purposes. Technical delivery conditions - Part 2: Non-alloy and alloy steel tubes with specified elevated temperature properties

**EN 10028-2:**                      Flat products made of steels for pressure purposes - Part 2: Non-alloy and alloy steels with specified elevated temperature properties

**EN 10242:**                         Threaded pipe fitting in malleable cast iron

**AD-2000 bulletins**

### 8 General description of the CLEARPOINT® V activated-carbon adsorber

The CLEARPOINT® L 1000 V bis L 8200 V activated-carbon adsorbers serve exclusively to separate residual oil contents in the form of vapour or aerosol from compressed air and nitrogen.

The compressed air should be predried, and should not exceed a moisture content of 30 % and a temperature of +35 °C. Exceeding these values will reduce the service life of the activated-carbon adsorber. Therefore, the employment of a refrigeration or even an adsorption dryer is required upstream of the activated-carbon adsorber.

With an appropriate dimensioning and when the operating parameters and load limits of the incoming compressed air on which the dimensioning is based are adhered to, the oil content is drastically reduced through the activated carbon contained in the adsorber. Besides the temperature, operating pressure and volume flow, the exact life expectancy and dimensioning depends on the applied type of oil, the compressor type and the humidity of the compressed air.

The following modifications of the operating conditions may lead to a reduction in the activated-carbon adsorber's service life:

- Increase of the volume flow
- Increase of the operating pressure
- Increase of the relative humidity of the compressed air
- Increase of the residual oil aerosol content at the inlet.

Therefore, you should benefit from the expertise of our special departments to design your activated-carbon adsorber.

Depending on the actual quality of the compressed air in your supply network, a prefilter and at least a refrigeration dryer is required for the incoming compressed air. The prefilter ensures that the oil aerosol content of the incoming compressed air does not exceed a value of 0.01 mg/m<sup>3</sup>. By treating the compressed air with a refrigeration dryer, the maximum permissible humidity of the compressed air of 30 % at the inlet into the adsorption dryer is guaranteed.

#### Not included in the scope of delivery:

- Prefilter
- Refrigeration dryer / adsorption dryer
- Afterfilter
- Internal tubing
- Oil check indicator

## 9 Operating principle

The **CLEARPOINT® V** activated-carbon adsorber from **BEKO TECHNOLOGIES** functions according to the principle of the accumulation of oil molecules on the surface and in the porous structures of special activated carbon.

The activated carbon is in a container, through which the medium flows continuously top down.

The compressed air, from which the oil fractions need to be removed, enters the device through the upper connection at the container.

Prior to that, the compressed air must have been filtered at least through a prefilter (residual oil aerosol content 0.01 mg/m<sup>3</sup> at +20 °C) and should not exceed a relative humidity of 30 % and a temperature of +35 °C. The service life of the activated-carbon adsorber will be reduced when these values are exceeded. Therefore, the employment of a refrigeration dryer or even an adsorption dryer upstream of the activated-carbon adsorber is advisable.

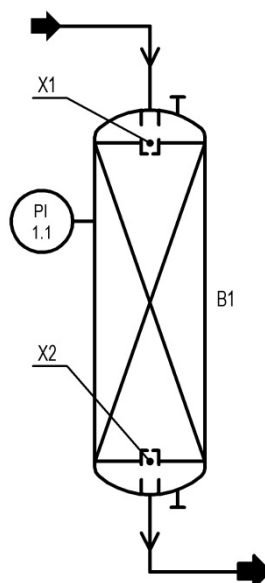
The compressed air flows through a compressed-air distributor and travels top down through the volume filled with activated carbon. During this process, the activated carbon adsorbs the majority of the residual oil aerosol contents and the oil vapour. Subsequently, the compressed air purified in this manner flows through the lower compressed-air distributor to the outlet.

This process takes place without regeneration phases. The activated carbon is thus gradually saturated with oil molecules and therefore needs to be replaced when the predefined service life has expired.

Activated carbon is able to reliably adsorb a wide range of non-polar hydrocarbons; there are, however, restrictions regarding the adsorption capacity as far as polar hydrocarbons are concerned (e.g. benzene). It must also be taken into account that abruptly changing operating conditions (pressure, volume flow) may lead to desorption of the already intercalated hydrocarbons.

It is explicitly recommended to provide a shut-off valve both upstream and downstream of the activated-carbon adsorber and to install a bypass around the activated-carbon adsorber. These components are not included in the scope of delivery.

**Fließbild**  
**CLEARPOINT® L 1000 – L 8200 V**



In order to reduce pressure loss, a fill of activated alumina was filled into the bottom of the container.

## Technical data

### 10 Technical data

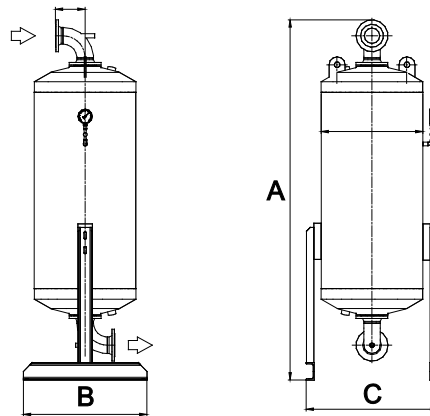
#### 10.1 Technical data CLEARPOINT® L 1000-8200 V

Name	<b>CLEARPOINT® L 1000 – L 8200 V</b>
Manufacturer	<b>BEKO TECHNOLOGIES GMBH</b> Germany, 41468 Neuss, Im Taubental 7
Type	Activated-carbon adsorber
Medium	Compressed air Saturated up to 30% Free from water or condensate Free from aggressive or corrosive components
Minimum ambient temperature	+5 °C
Maximum ambient air temperature	+50 °C
Maximum air volume flow at the inlet	See table
Minimum compressed-air inlet temperature	+2 °C
Maximum compressed-air inlet temperature	+50 °C
Recommended compressed-air inlet temperature	+35 °C*
Recommended residual humidity of the compressed air at the inlet	< 30 %*
Maximum permissible operating overpressure L 1000-8200 V	11 bar(g)
Recommended operating pressure	7 bar(g)
Residual oil content at the outlet	max. 0.003 mg/m <sup>3</sup>
Adsorbent	Activated carbon type 1
Service life at nominal performance data and reference conditions	Approx. 10,000 operating hours
Compressed-air connection	See table
Height x width x depth approx.	See table
Weight approx.	See table
Category acc. to PED 2014/68/EC – fluid group 2	See table

<b>Design data pressure vessel</b>	
Design pressure L 1000-8200 V	11 bar(g)
Design temperature	-10 / +120 °C
Design and construction	In accordance with PED 2014/68/EC and AD-2000

\* The service life of the activated-carbon adsorber is reduced when this value is exceeded

**Abmessungen  
CLEARPOINT® L 1000 – L 8200 V**



Type	Volume flow*	Connection	A**	B**	C**	Activated carbon	Weight	Category PED 2014/68/EC
	[m³/h]	DN	[mm]	[mm]	[mm]	[kg]	[kg]	Fluid gr. 2
L 1000 V	1000	65	2300	650	630	100	305	IV
L 1250 V	1250	65	2300	700	680	130	355	IV
L 1550 V	1550	65	2270	750	755	165	420	IV
L 1700 V	1700	80	2335	750	805	180	500	IV
L 2000 V	2000	80	2360	850	855	210	600	IV
L 2300 V	2300	100	2480	850	905	245	670	IV
L 2600 V	2600	100	2500	1000	955	280	750	IV
L 2900 V	2900	100	2520	1000	1005	310	820	IV
L 3400 V	3400	100	2540	1000	1055	360	920	IV
L 4200 V	4200	150	2810	1100	1030	440	1120	IV
L 5000 V	5000	150	2870	1250	1130	530	1370	IV
L 6000 V	6000	150	2930	1250	1225	635	1630	IV
L 7000 V	7000	150	2970	1450	1345	740	1930	IV
L 8200 V	8200	150	3010	1450	1445	870	2220	IV

\* Maximum volume flow at the inlet acc. to ISO 7183, related to +35 °C and 7 bar(g)

\*\* ±30 mm

## Technical data

---

### 10.2 Available options

#### Prefilter

It is recommended to use a **BEKO** filter with an automatic condensate drain. This prefilter ensures that the oil aerosol content of the incoming air does not exceed a value of 0.01 mg/m<sup>3</sup>.

For details, please refer to the following filter selection table.

#### Afterfilter

Downstream of each activated-carbon adsorber, an afterfilter (minimum requirement 1 µm) must be installed that retains dusts and particles from the activated carbon that develop due to the way the system operates.



**It is recommended to use a BEKO dust filter in an oil and grease-free version.**

For details, please refer to the following filter selection table.

#### Compressed-air dryer

For the safe functioning of the **CLEARPOINT® V**, the compressed air must not exceed a relative humidity of 30 % at the inlet into the activated-carbon adsorber. The service life of the activated-carbon adsorber will be reduced when these values are exceeded. Therefore, the employment of a refrigeration or even an adsorption dryer is required upstream of the activated-carbon adsorber.

Please contact our specialist departments to select a suitable compressed-air dryer.

#### Oil check indicator

For the rough assessment of the compressed-air quality, an oil check indicator can be used. The oil check indicator can be installed on the head of the **CLEARPOINT®** dust filter (you will find the adapter and oil check indicator, as well as replacement test tubes, in our price list).

#### **METPOINT® OCV residual oil measuring device**

For the continuous qualitative assessment of the compressed-air quality, the use of our **METPOINT® OCV** residual oil measuring device is advisable. By means of a measuring section, the **METPOINT® OCV** can be installed in the pipework downstream of the afterfilter, and will then show the residual oil vapour content **ONLINE**.

#### **Service determination residual oil content**

Our service department will be happy to submit you a corresponding offer for the cyclic qualitative assessment of the compressed-air quality.

10.3 Filter selection table

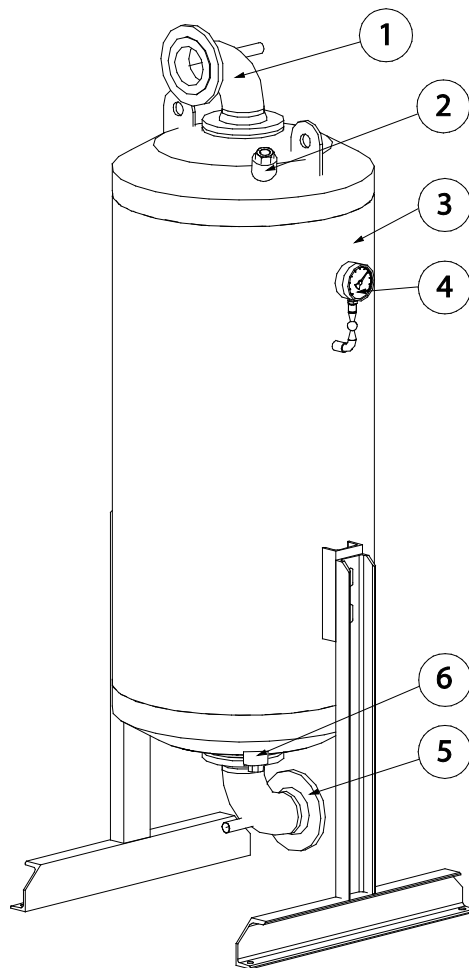
Model	Option prefilter		Option dust filter Filter + filter elements purified without oil	
	Coalescing Filter (0.01 µm / 0.01 mg/m <sup>3</sup> *)	Filter element	Dust filter outlet (1 µm / 0.1 mg/m <sup>3</sup> *)	Filter element
L 1000 V	M023SWT	23S	M025RFWMX-OF	25F-OF
L 1250 V	M025SWT	25S	M027RFWMX-OF	27F-OF
L 1550 V	M025SWT	25S	M027RFWMX-OF	27F-OF
L 1700 V	M027SWT	27S	M032RFWMX-OF	32F-OF
L 2000 V	M030SWT	30S	M032RFWMX-OF	32F-OF
L 2300 V	L100SWT	88S	L100RFWM	88F
L 2600 V	L100SWT	88S	L100 RFWM	88F
L 2900 V	L100SWT	88S	L100 RFWM	88F
L 3400 V	L102SWT	88S	L102 RFWM	88F
L 4200 V	L102SWT	88S	L102 RFWM	88F
L 5000 V	L150 SWT	88S	L150RFWM	88F
L 6000 V	L150 SWT	88S	L150 RFWM	88F
L 7000 V	L156 SWT	88S	L156 RFWM	88F
L 8200 V	L156 SWT	88S	L156 RFWM	88F

\*at 20 °C and 1 bar absolute according to ISO 8573

## Description of the components

---

### 11 Description of the components



- |   |  |
|---|--|
| 1 | Compressed-air INLET                       |
| 2 | Filler neck for activated carbon           |
| 3 | Container for the activated-carbon filling |
| 4 | Manometer pressure vessel                  |
| 5 | Compressed-air - OUTLET                    |
| 6 | Draining nozzle for activated carbon       |

## 12 Transport and set-up

### 12.1 Safety during transport and set-up



#### **IMPORTANT!**

Danger through improper transport!

The **CLEARPOINT® V** must only be transported and installed by qualified and authorised skilled personnel.

Only use suitable and technically sound lifting tools!

Only use lifting tools with a sufficient carrying capacity!

The respective national regulations and directives in force must be adhered to. Otherwise, personal injuries may occur.



#### **IMPORTANT!**

Danger through damaged components!

Under no circumstances should you start up a damaged **CLEARPOINT® V**. Defective components can impair the operational reliability and cause further damage.

### 12.2 Transport

The **CLEARPOINT® V** activated-carbon adsorber was thoroughly tested and packed prior to leaving the factory. It was in a perfect condition when handed over to the forwarding agent.

Despite all due care, transport damage cannot be excluded. Therefore, check the **CLEARPOINT® V** for possible transport damage subsequent to transport and removal of the packaging material. The forwarding agent and **BEKO TECHNOLOGIES** or the **BEKO TECHNOLOGIES** agency must be informed immediately about any kind of damage. If no evident damage to the packaging or the plant was ascertained but hidden defects are detected at a later moment in time, the forwarding agent must immediately be informed so as to allow him to assess and document the damage.

In the event that the plant is damaged, it is imperative to contact the manufacturer to know whether or not the system may be started up.

Please observe the following points regarding the transport:

- Provide suitable lifting tools for the transport.
- Persons in charge of the transport must have the corresponding qualification.
- With the lifting tools, the activated-carbon adsorber must only be lifted at the intended points (transport pallet, frame, eyebolts on the top of the container).
- Observe the weight of the activated-carbon adsorber and the maximum permitted load of the lifting tools and means of transport used.
- National regulations regarding accident prevention must be adhered to.

### 12.3 Set-up

Observe the transport and lifting instructions on the packaging.

Provide suitable lifting tools for the transport and set-up.

Secure the **CLEARPOINT® V** against shifting on the fork-lift truck.

Move the **CLEARPOINT® V** to the place of installation.

The function and service life of the **CLEARPOINT® V** depends on the conditions at the place of installation. This place must meet the following requirements:

- The device is installed within a building.
- The device must not be operated in explosive or fire-endangered atmospheres, in an environment with aggressive chemicals, superheated steam or strong contamination, or in a very hot environment.
- The **CLEARPOINT® V** must be protected against moisture.
- The ambient temperature must not exceed/undercut the indications in the "Technical data" section.
- Choose an even, solid and vibration-free set-up area. The weight of the **CLEARPOINT® V** must be taken into account when choosing the area.
- No vibrations must be transferred to the **CLEARPOINT® V**. If necessary, install the activated-carbon adsorber on vibration dampers.
- The pipework must be free from mechanical stress (otherwise risk of bursting).
- It must be ensured that vibrations from other plant components cannot be transferred. This also and particularly concerns the pulsation of the compressed air as otherwise, the activated carbon may be destroyed.
- Set up the **CLEARPOINT® V** in such a manner that the plant is easily accessible from the sides. For checks of the pressure vessels, maintenance and repair measures, sufficient free space must be available on all sides (at least 1.5 m) around the **CLEARPOINT® V**.
- Install the activated-carbon adsorber in such a manner that the front panel with the manometer is well accessible.
- The activated-carbon adsorber must be fixed on the floor area by means of the bores in the frames or feet. In particular as far as devices without a frame construction are concerned, the tank needs to be secured against tilting at the intended place of installation. In the further course of the installation, the pipes and dust filters (not included in the scope of delivery) must be fixed separately, if required.
- Ensure sufficient ventilation and heat removal.
- Keep a safe distance from transport routes when setting up the **CLEARPOINT® V**.
- Equip the plant with a suitable collision guard.

In the event of doubt, we recommend obtaining expert advice regarding the place of installation.

Remove the packaging of the **CLEARPOINT® V**.

Move the **CLEARPOINT® V** to the place of installation.

Position the **CLEARPOINT® V** at the desired place and adjust the plant accordingly.

## 13 Installation

### 13.1 Safety during the installation



Installation works must exclusively be carried out by authorised and qualified skilled personnel. Prior to undertaking any measures on the **CLEARPOINT® V**, the skilled personnel shall read up on the device by carefully studying the operating instructions. The operator is responsible for the adherence to these provisions. The respective directives in force apply to the qualification and expertise of the skilled personnel.

For safe operation, the device must only be installed and operated in accordance with the indications in the operating instructions. In addition, the national and operational statutory provisions and safety regulations, as well as the accident prevention regulations required for the respective case of application, need to be observed during employment. This applies accordingly when accessories are used.



#### **DANGER!**

##### **Compressed air!**

There is a danger of serious personal injury or death through contact with fast or suddenly escaping compressed air or through bursting system parts.



All installation, maintenance and repair work may only be carried out when the **CLEARPOINT® V** is depressurised.

It is the duty of the operating company to ensure that the connected pressure generator is protected against exceeding the maximum operating overpressure and the temperature limits on the **CLEARPOINT® V**. The max. permissible operating parameters, such as the operating overpressure, temperature and volume flow must not be exceeded. The max. permissible operating parameters are specified on the type plate and in the technical data (see "Technical data" section).

The operator must ensure through the installation of suitable safety devices that the safety-relevant operating factors (pressure, temperature, flow) are not exceeded.

Pressure relief valves used need to be arranged in such a manner that endangering of persons is excluded. Where required, observe the manufacturer's additional advice. Suitable and permissible safety arming devices need to be provided in accordance with the local regulations.

Never make any modifications to the plant!

Only use suitable tools and original spare and accessory parts!

Only use fittings and connection elements which are approved for this application. Always observe the specifications made by the respective manufacturer. Ensure the connections are assembled properly.

Only pipes, valves and fittings which are suitable for the pressure and temperature range may be used. Always observe the specifications made by the manufacturer.

Sudden load due to pressurisation can cause damage and compressed air to escape. Avoid sudden pressurisation by actuating the valves slowly.

After installation, check all the pipe connections and tighten these if necessary!

The general statutory safety and accident prevention regulations apply!

A leakage test must be carried out before commissioning. This may only be carried out by suitably qualified skilled personnel observing the safety regulations.

## Installation

---



### **Danger!**

#### **Incorrect installation!**

Incorrect installation of the **CLEARPOINT® V** involves the risk of personal injury.

Ensure that the personnel in charge of the installation of the **CLEARPOINT® V** are sufficiently instructed and competent for this task.



### **NOTE!**

#### **Installation works!**

Installation works at the compressed-air system must only be carried out by skilled personnel<sup>1</sup> authorised by the operator.



### **CAUTION!**

#### **Danger through damaged components!**

Under no circumstances should you start up a damaged **CLEARPOINT® V**. Defective components can impair the operational reliability and cause further damage.



### **NOTE!**

#### **Operational reliability at risk!**

Incorrect installation can compromise the operational reliability and affect service measures.

The clear diameter of the pipe joint must be at least as large as the mounting dimension of the **CLEARPOINT® V**.

It is strongly recommended to install a shut-off valve both upstream and downstream of the **CLEARPOINT® V** for the implementation of service measures.

To maintain the supply of compressed air during service failures, maintenance and repair works on the **CLEARPOINT® V**, the installation of a bypass line around the **CLEARPOINT® V** is advisable. This bypass line must have a shut-off valve.

---

<sup>1</sup> Authorised skilled personnel are persons who are authorised by the operator, with experience and technical training, who are well-grounded in the respective provisions and laws and capable of carrying out the required works and of identifying and avoiding any risks during the machine transport, installation, operation and maintenance.

## 13.2 Minimum requirements

### 13.2.1 Filtration of the compressed air

Prefilter: Super-fine filter (S) with condensate drain  
max. residual content oil aerosols 0.01 mg/m<sup>3</sup> at 20°C

Afterfilter: Dust filter (F) with manual drain  
Particle classification 1 µm

### 13.2.2 Water content of the compressed air

Max. permissible residual humidity: < 30%

### 13.2.3 Inlet temperature of the compressed air

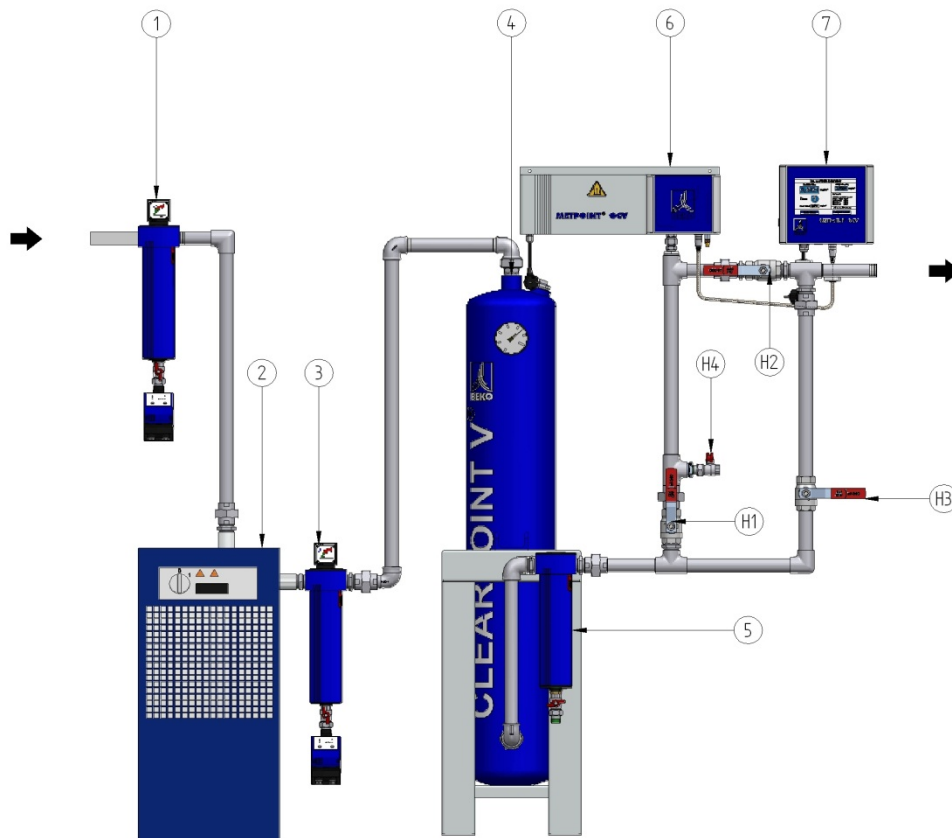
Recommended inlet temperature: + 35°C



Non-observance of the indicated minimum requirements regarding the installation and permissible operating parameters can lead to drastic reduction of the service life of the **CLEARPOINT® V** activated-carbon adsorber.

## 13.3 Installation examples

### 13.3.1 Installation diagram CLEARPOINT® V with a refrigeration dryer

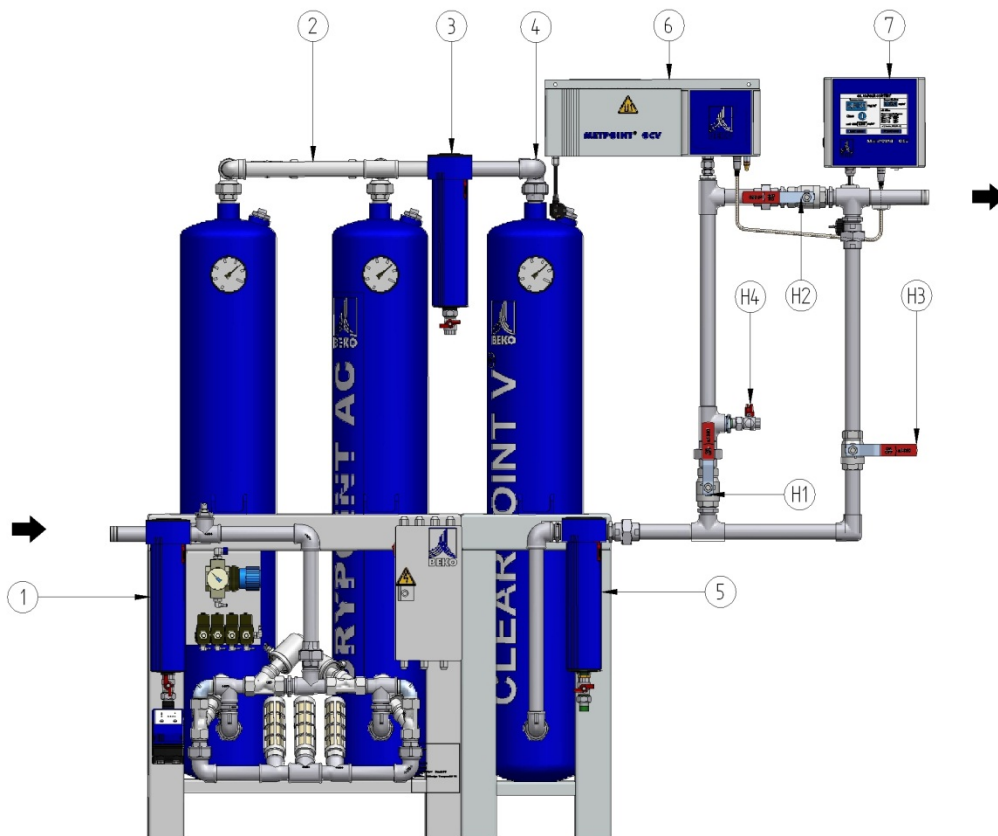


- 1 Universal filter (G) with **BEKOMAT**®
  - 2 Refrigeration dryer
  - 3 Super-fine filter (S) with **BEKOMAT**®
  - 4 Activated-carbon adsorber
  - 5 Dust filter (F) with manual drain
  - 6 Sensor unit **METPOINT**® OCV
  - 7 Evaluation unit with user interface **METPOINT**® OCV
- H1/H2 Shut-off valves of the measuring section
- H3 Shut-off valve of the bypass
- H4 Vent valve of the measuring section
- Oil- and grease-free zone

The depicted installation shows the minimum requirement regarding the installation of a **CLEARPOINT**® V activated-carbon adsorber. Other types of installation are possible (provided that they meet the defined operating conditions).

For service measures, it is recommended to install a bypass around the **CLEARPOINT**® V. This applies generally to all components to be serviced in compressed-air systems. Please observe that this bypass must also be free from oil and grease!

13.3.2 Installation diagram CLEARPOINT® V with an adsorption dryer



- 1 Super-fine filter (S) with **BEKOMAT®**
  - 2 Adsorption dryer
  - 3 Dust filter (F) with manual drain
  - 4 Activated-carbon adsorber
  - 5 Dust filter (F) with manual drain
  - 6 Sensor unit **METPOINT® OCV**
  - 7 Evaluation unit with user interface **METPOINT® OCV**
- H1/H2 Shut-off valves of the measuring section
- H3 Shut-off valve of the bypass
- H4 Vent valve of the measuring section
- Oil-and grease-free zone

The depicted installation shows another installation possibility of the **CLEARPOINT® V** activated-carbon adsorber that meets the minimum requirements. Other types of installation are possible (provided that they meet the defined operating conditions).

For service measures, it is recommended to install a bypass around the **CLEARPOINT® V**. This applies generally to all components to be serviced in compressed-air systems. Please observe that this bypass must also be free from oil and grease!

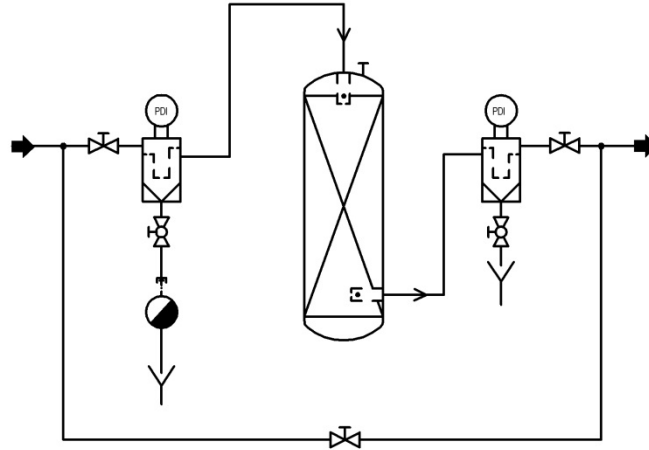
## Installation

### 13.4 Work steps during the installation

It is strongly recommended to install a shut-off valve both upstream and downstream of the **CLEARPOINT® V**.

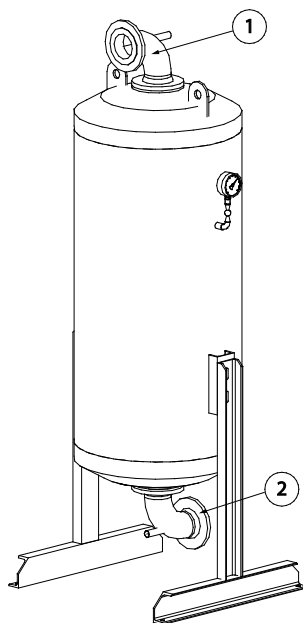
To maintain the supply of compressed air during service failures, maintenance and repair works on the **CLEARPOINT® V**, the installation of a bypass line around the **CLEARPOINT® V** is advisable. This bypass line must have a shut-off valve.

Installation example with prefilter, afterfilter, shut-off valves and bypass:



To install the **CLEARPOINT® V**, proceed as follows:

- Ensure that the conditions of use of the **CLEARPOINT® V** are met and that the operation limits are not exceeded.
- Ensure that the system is pressureless prior to integrating the **CLEARPOINT® V** into the compressed-air system.
- Prior to installation, it must be ensured that all possible contaminations are removed from the compressed-air system.
- Connect the following connections with your supply system or with your plant:



- Compressed-air inlet (1)
- Compressed-air outlet (2)



Carry out a leak test of the connections prior to the start-up.

## 14 Start-up

### 14.1 Safety during the start-up



It is imperative to observe all specifications and notes in these installation and operating instructions

Non-observance of the installation and operating instructions involves risks for persons and systems.

If you have any queries regarding these instructions, please contact **BEKO TECHNOLOGIES**.



#### **Warning!**

##### **Incorrect start-up!**

The incorrect start-up of the **CLEARPOINT® V** involves the risk of personal injury.

Prior to starting up the **CLEARPOINT® V**, it must be ensured that the operating staff are instructed according to these instructions for installation and operation with regard to the set-up, monitoring, operation and maintenance of the plant, as well as to the safety measures to be observed.



#### **DANGER!**

##### **Compressed air!**

Risk of serious injury or death through contact with quickly or suddenly escaping compressed air or through bursting plant components.



Maintenance, inspection and installation works must exclusively be carried out by authorised and qualified skilled personnel. Prior to undertaking any measures on the **CLEARPOINT® V** the skilled personnel shall read up on the device by carefully studying the operating instructions. The operator is responsible for the adherence to these provisions. The respective directives in force apply to the qualification and expertise of the skilled personnel.

It is the operator's duty to ensure that the connected pressure generator is secured against exceeding of the maximum operating overpressure and the temperature limits at the **CLEARPOINT® V**.

Do not exceed the max. permissible operating overpressure. The max. permissible operating overpressure is specified on the type plate and in the technical data (see "Technical data" section).

Sudden impact through pressure build-up can cause damage and escape of compressed air. Avoid a sudden pressure build-up by operating the valves slowly.

The general safety and accident prevention regulations apply!



#### **CAUTION!**

##### **Operational reliability at risk!**

Overloading the **CLEARPOINT® V** can compromise the operational reliability!

Observe the permissible temperature range!

Do not exceed the permissible volume flow!

## Start-up

---



**Caution!**

**Activated-carbon dust!**

**Eyes and respiration are endangered through quickly or suddenly escaping activated-carbon dust.**



Activated carbon can produce dust and wear debris!

Use eye protection!



During the start-up of the activated-carbon adsorber, compressed air might escape and cause a very loud expansion noise. Wear silencing ear protectors.

Wear personal protective clothing!



Wear light breathing protection at strong dust development!



### 14.2 Check prior to the start-up

As regards the check prior to the start-up, the country-specific provisions need to be observed.



The plant contains pressure equipment of different categories according to the 2014/68/EC Pressure Equipment Directive. For this reason it is necessary to register the entire plant with the relevant authority in accordance with the local provisions and to have it approved.

In countries outside the EU, the respective regulations in force there need to be adhered to.

### 14.3 Initial start-up



Please fill in the data from the type plate of the activated-carbon adsorber into the table on page 3!

#### Work steps:

- Ensure that the conditions of use of the **CLEARPOINT® V** are met and that the operation limits are not exceeded.
- Check the operating data of the plant and compare these with the permissible operating data from the "Technical data" section. Should you ascertain deviations, adjust the operating parameters according to the specifications.
- Ensure that all installation steps were carried out properly.
- Check whether or not the activated-carbon adsorber is completely tubed. If not, carry out proper installation.
- Check whether or not the shut-off valves upstream of the inlet and downstream of the outlet of the activated-carbon adsorber are closed. If not, close both shut-off valves.
- Set the compressed-air system under system pressure upstream of the shut-off valve on the entering side of the activated-carbon adsorber. If required, start the compressor.
- Open the shut-off valve upstream of the activated-carbon adsorber slowly. The activated-carbon adsorber is set under operating pressure.



**Filling of the activated-carbon adsorber with compressed air during the start-up must be implemented as slowly as possible. Under no circumstances must the flow rates which correspond to those of the nominal performance data be exceeded.**

**Recommended amount of compressed air during the filling of the activated-carbon adsorber:**

**Pressure build-up approx. 1 bar/min (or 1% of the nominal performance)**

**This is particularly important during the initial start-up / subsequent to maintenance measures. Flow rates which are too high cause high pressure difference and impulse-like strong abrasive wear on the activated carbon which can also overwhelm the downstream dust filter.**

- Check all pipe connections for tightness.
- Open the shut-off valve downstream of the outlet filter **slowly** and set the entire compressed-air system under pressure.



Filling of the downstream tank/pipe network must be implemented as slowly as possible and must, under no circumstances, exceed the flow rates of the nominal performance data. The operating pressure at the activated-carbon adsorber must be maintained (see manometer). This is particularly important during the initial start-up/subsequent to maintenance measures. Flow rates which are too high cause impulse-like strong abrasive wear on the activated carbon which can also overwhelm the downstream dust filter.

## Start-up

---

Prior to delivery the activated carbon that is contained in the **CLEARPOINT® V** is dried in the factory. If the activated-carbon adsorber is not installed immediately after having been delivered, and if it is installed downstream of an adsorption dryer, it may be necessary to allow dry compressed air to flow through the activated-carbon adsorber for approximately four to six hours to remove the residual moisture from the activated carbon.

If the activated-carbon adsorber is equipped with a **METPOINT® OCV**, the initial start-up should be implemented without **METPOINT® OCV**. To prevent the risk of contaminations through dust, the **METPOINT® OCV** should only be installed after a trial run of several hours (for the installation of the probe, the plant section again needs to be unpressurised).

Subsequent to the successful start-up, no other works are required. The **CLEARPOINT® V** is now ready to operate. In the event that unexpected failures occur during the running operation, please inform the service technician who is responsible for you.

### 14.4 Restart

If the **CLEARPOINT® V** is restarted after a longer down time, proceed as during the initial start-up.

Check, above all after completed maintenance or repair measures, whether the **CLEARPOINT® V** is completely tubed. If not, carry out proper installation.

### 14.5 Removal from service

For safety reasons, short-term removal from service should always be implemented together with the compressor.

For the removal from service during maintenance or repair measures, please proceed as follows:

- Unpressurise the plant prior to any maintenance or repair measures!
- Open the bypass line (not included in the scope of delivery).
- Close the shut-off valves (not included in the scope of delivery) upstream and downstream of the activated-carbon adsorber.
- Unpressurise the activated-carbon adsorber.



**Stagnation pressure may occur in pipe sections or in the container due to plugging. It is imperative to observe the manometer at the container during the pressure reduction! Ensure that there is no stagnation pressure in pipe sections or in the container. This is particularly possible if the compressed-air distributor or the filter element of the afterfilter (not included in the scope of delivery) are blocked as a result of a large amount of wear debris.**

### 15 Troubleshooting and fault elimination

#### 15.1 Safety during troubleshooting and fault elimination



Works regarding the troubleshooting and fault elimination must exclusively be carried out by authorised and qualified skilled personnel. Prior to undertaking any measures on the **CLEARPOINT® V**, the skilled personnel shall read up on the device by carefully studying the operating instructions. The operator is responsible for the adherence to these provisions. The respective directives in force apply to the qualification and expertise of the skilled personnel.

For safe operation, the device must only be operated and maintained in accordance with the indications in the operating instructions. In addition, the national and operational statutory provisions and safety regulations, as well as the accident prevention regulations required for the respective case of application, need to be observed during employment. This applies accordingly when accessories are used.



#### **Danger!**

#### **Incorrect fault elimination!**

The incorrect fault elimination at the **CLEARPOINT® V** involves the risk of personal injury.

Ensure that the personnel in charge of the operation, supervision and maintenance of the **CLEARPOINT® V** are sufficiently instructed and competent for this task.



#### **NOTE!**

#### **Troubleshooting and fault elimination!**

Operations, system performance tests, installation, setting and maintenance measures at the compressed-air system must only be carried out by skilled personnel<sup>2</sup> authorised by the operator.

---

<sup>2</sup> Authorised skilled personnel are persons who are authorised by the operator, with experience and technical training, who are well-grounded in the respective provisions and laws and capable of carrying out the required works and of identifying and avoiding any risks during the machine transport, installation, operation and maintenance.

## Troubleshooting and fault elimination

---



### **DANGER!**

#### **Compressed air!**

Risk of serious injury or death through contact with quickly or suddenly escaping compressed air or through bursting plant components.



All types of installation, maintenance and repair works must only be carried out when the **CLEARPOINT® V** is pressureless.

The max. permissible operating overpressure must not be exceeded. The max. permissible operating overpressure is specified on the type plate and in the technical data (see "Technical data" section).

Never make structural modifications to the plant!

Use suitable tools and genuine spare parts and accessories only!

Only use pipes, valves and fittings which are suitable for the pressure and temperature range. It is of vital importance to observe the specifications of the manufacturer.

Check all pipe connections subsequent to maintenance or repair measures and retighten them if necessary!

Prior to the restart, a leak test needs to be carried out. This test shall only be effected by correspondingly qualified skilled personnel in compliance with the safety regulations.

15.2 Status and alarm indications

Residual oil content too high	
Possible cause of failure	Fault elimination
Inlet volume flow too high	<ul style="list-style-type: none"> <li>• Reduce the inlet volume flow</li> </ul>
Operating pressure too low	<ul style="list-style-type: none"> <li>• Increase the operating pressure</li> </ul>
Compressed-air temperature at the inlet too high	<ul style="list-style-type: none"> <li>• Reduce the compressed-air temperature at the inlet</li> <li>• Install a precooler, if required</li> </ul>
Inlet filter elements exhausted Pressure difference too high	<ul style="list-style-type: none"> <li>• Replace the inlet filter elements</li> </ul>
Use of oil-contaminated filters or filter elements downstream of the activated-carbon adsorber	<ul style="list-style-type: none"> <li>• Use of <b>BEKO</b> filters and filter elements in an oil- and grease-free version</li> </ul>
Oil-contaminated circuit sections between the activated-carbon adsorber and the measuring point	<ul style="list-style-type: none"> <li>• Clean the pipesection or install a new pipesection</li> </ul>
Condensate drainage upstream of the activated-carbon adsorber does not work	<ul style="list-style-type: none"> <li>• Check the functioning of the condensate drain (at the inlet filter), repair or replace it, if required</li> </ul>
Max. absorption capacity of the activated carbon reached	<ul style="list-style-type: none"> <li>• Replace the activated carbon</li> </ul>

## Troubleshooting and fault elimination

Container pressure too low / Operating pressure in the system too low	
Possible cause of failure	Fault elimination
Pressure difference of the inlet filter is too high	<ul style="list-style-type: none"> <li>• Check the pressure drop via the inlet filter</li> <li>• Replace the filter element, if required</li> </ul>
The compressed-air system upstream of the activated-carbon adsorber is pressureless	<ul style="list-style-type: none"> <li>• Check the compressed-air system upstream of the activated-carbon adsorber</li> <li>• Eliminate any faults</li> </ul>
Larger amounts of wear debris in the system: clogged compressed-air distributor or filter elements	<ul style="list-style-type: none"> <li>• Replace the dust filter element</li> <li>• Replace the activated carbon</li> <li>• Clean the compressed-air distributor</li> <li>• Verify the operating conditions (pulsation, volume flow)</li> </ul>



### NOTE!

In the event of malfunctions which are not listed here or which cannot be eliminated, please contact **BEKO TECHNOLOGIES**.

## 16 Maintenance

### 16.1 Safety during maintenance



Maintenance, inspection and installation works must exclusively be carried out by authorised and qualified skilled personnel. Prior to undertaking any measures on the **CLEARPOINT® V** the skilled personnel shall read up on the device by carefully studying the operating instructions. The operator is responsible for the adherence to these provisions. The respective directives in force apply to the qualification and expertise of the skilled personnel.

For safe operation, the device must only be operated and maintained in accordance with the indications in the operating instructions. In addition, the national and operational statutory provisions and safety regulations, as well as the accident prevention regulations required for the respective case of application, need to be observed during employment. This applies accordingly when accessories are used.



#### **Danger!**

#### **Incorrect maintenance!**

Incorrect maintenance of the **CLEARPOINT® V** involves the risk of personal injury.

Ensure that the personnel in charge of the operation, supervision and repair of the **CLEARPOINT® V** are sufficiently instructed and competent for this task.



#### **NOTE!**

#### **Maintenance works!**

Operation, system performance checks, installation, setting and maintenance measures at the compressed-air system must only be carried out by skilled personnel<sup>3</sup> authorised by the operator.

---

<sup>3</sup> Authorised skilled personnel are persons who are authorised by the operator, with experience and technical training, who are well-grounded in the respective provisions and laws and capable of carrying out the required works and of identifying and avoiding any risks during the machine transport, installation, operation and maintenance.

## Maintenance

---



### **DANGER!**

#### **Compressed air!**

Risk of serious injury or death through contact with quickly or suddenly escaping compressed air or through bursting plant components.



All types of installation, maintenance and repair works must only be carried out when the **CLEARPOINT® V** is pressureless.

Do not exceed the max. permissible operating overpressure. The max. permissible operating overpressure is specified on the type plate and in the technical data (see "Technical data" section).

Never make structural modifications to the plant!

Use suitable tools and genuine spare parts and accessories only!

Only use pipes, valves and fittings that are suitable for the pressure and temperature range. It is of vital importance to observe the specifications of the manufacturer.

Check all pipe connections subsequent to maintenance or repair measures and retighten them if necessary!

Prior to the restart, a leak test needs to be carried out. This test shall only be effected by correspondingly qualified skilled personnel in compliance with the safety regulations.



### **Caution!**

#### **Activated-carbon dust!**

**Eyes and respiration are endangered through quickly or suddenly escaping activated-carbon dust.**



Activated carbon can produce dust and wear debris!

Use eye protection!



During the start-up of the activated-carbon adsorber, compressed air might escape and cause a very loud expansion noise. Wear silencing ear protectors.

Wear personal protective clothing!



Wear light breathing protection at strong dust development!



### **Caution!**

#### **Activated carbon produces dust and wear debris!**

**Endangering through dust explosion.**

Use suitable tools and ex-protection-tested suction plants and accessories. Observe the safety instructions.

## 16.2 Maintenance in general

The plant must be checked at regular intervals in accordance with the applicable national regulations. In this respect, the following points need to be observed:

- In order to ensure high operational and performance reliability, regular maintenance measures are required.
- Watch for abnormalities and possible malfunctions during the running operation.
- Deficiencies must immediately be reported to the responsible units/persons.
- For emergency cases, there must be the possibility to cut off the plant section.

## 16.3 Maintenance of the CLEARPOINT® V activated-carbon adsorber

Action	daily	weekly	annually*
Check the exterior of the plant for contaminations, damages and corrosion		x	
Record the current operating parameters and compare them with the indications under "Technical data"	x		
Check the manometer	x		
Check all pipe connections and threaded connections and retighten them if necessary			x
Check the activated-carbon adsorber for leaks		x	
Verify the result of the oil adsorption (e.g. by means of a <b>METPOINT® OCV</b> or a laboratory analysis)			x
Replace the activated carbon			x

\* or every 10,000 operating hours

### 16.3.1 Replacement of the activated carbon

Depending on the operating conditions, the activated carbon has a service lifetime of approximately 10,000 operating hours. Afterwards, the adsorption capacity of the activated carbon is exhausted.



As a matter of principle, replace the complete contents of the activated-carbon filling.

The activated carbon must be replaced by a correspondingly trained and authorised specialist company. Please request the **BEKO** service.

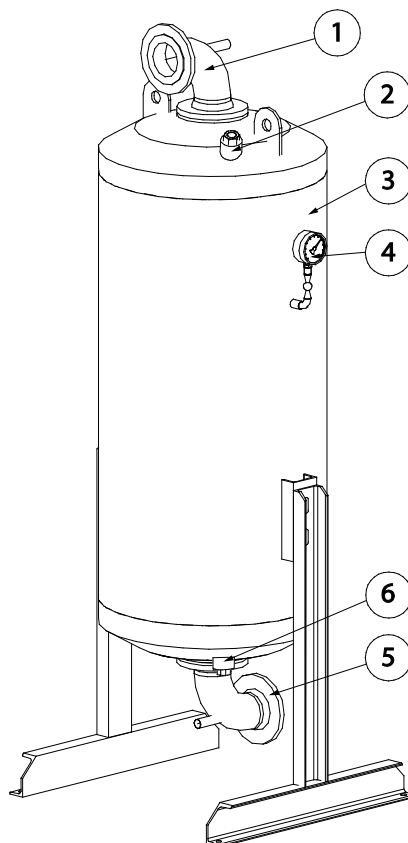
The employed activated carbon is not subject to any labelling obligation in accordance with the Ordinance on Hazardous Substances. However, the usual precautions regarding the handling of chemicals need to be taken.

In the event of fire, there are no restrictions regarding the applicable fire-extinguishing agents. It is recommended to use CO<sub>2</sub>, powder or a directed spray of water; use a directed spray of water or alcohol-resistant foam in the event of larger fires. Special personal protective equipment for firefighting is not required.

Spilled activated carbon should be removed, avoiding dust to the largest possible extent.

To replace the activated carbon, please carry out the following work steps:

1. Remove the plant from service. For this purpose, follow the directions in the "Removal from service" section.
2. Place a suitable vessel under the **CLEARPOINT® V** activated-carbon adsorber and open the draining nozzle (6) at the bottom.



3. Allow the used, activated carbon to flow into the receiver. Ensure sufficient dust extraction. Subsequent to the full drainage of the container, reclose this nozzle with the seal and blind plug.

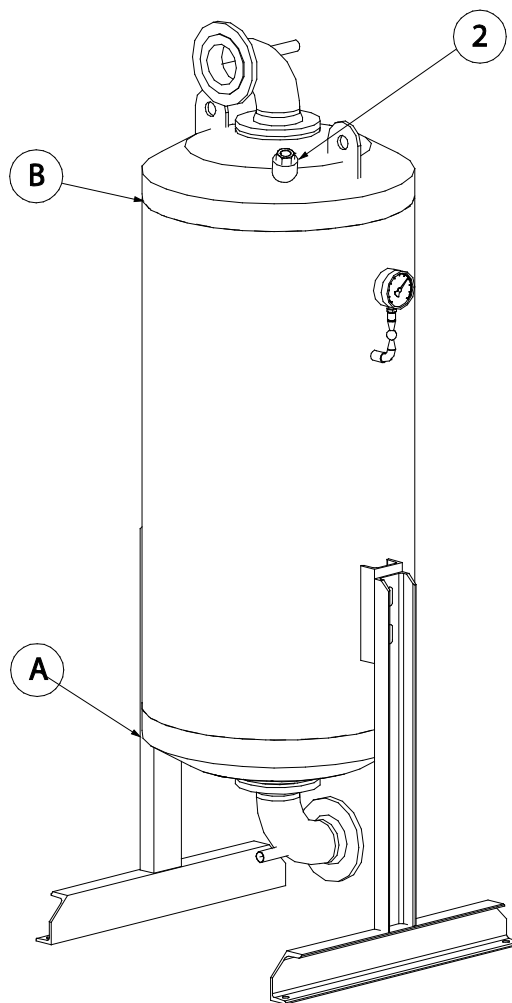


According to the industrial safety regulations, the selection of a suitable suction system is incumbent on the operator of the plant. In this respect, the relevant regulations of explosion protection need to be taken into account, as the dusts contained in the activated carbon may induce an explosive atmosphere, depending on the amount and consistency.

The suction system should be checked with regard to the dust explosion hazard and approved for these areas (minimum requirement zone 22). Please use conductive accessories only.

Where flammable vapours or gases exist, an additional approval for the gas explosion protection is required. Where contamination through toxic, harmful, mutagenic or mutation-promoting components is anticipated, suitable filters must additionally be provided.

4. Fill the container with activated alumina until you reach pos. A. Subsequently fill the container with activated carbon until you reach the lower edge of the upper circular weld (pos. B). Only use the original activated carbon from **BEKO TECHNOLOGIES**. Use a commercially available funnel for filling.



## Maintenance

---

5. Mount the fill plug with a seal at the filler neck (2) of the container.
6. Check the connections for tightness. In this respect, follow the directions in the "Initial start-up" section.

### 16.4 Periodic inspections

The pressure vessel of the **CLEARPOINT® V** activated-carbon adsorber must be checked at regular intervals by a technical expert or an authorised expert. The determination of the time limits regarding periodic inspections is incumbent on the operator and, depending on the classification into the pressure device category in accordance with the Pressure Equipment Directive, must be carried out by a certified inspection agency.

## 17 Dismantling and disposal

When dismantling the **CLEARPOINT® V**, all parts and operating media related to the plant must be disposed of separately.

The **CLEARPOINT® V** is supplied ready to operate with the following operating materials:

Type <b>CLEARPOINT® V</b>	Operating material	Amount [kg] undried
L 1000 V	Activated carbon type 2 / activated alumina	100 / 22
L 1250 V	Activated carbon type 2 / activated alumina	130 / 27
L 1550 V	Activated carbon type 2 / activated alumina	165 / 35
L 1700 V	Activated carbon type 2 / activated alumina	180 / 40
L 2000 V	Activated carbon type 2 / activated alumina	210 / 60
L 2300 V	Activated carbon type 2 / activated alumina	245 / 70
L 2600 V	Activated carbon type 2 / activated alumina	280 / 80
L 2900 V	Activated carbon type 2 / activated alumina	310 / 90
L 3400 V	Activated carbon type 2 / activated alumina	360 / 100
L 4200 V	Activated carbon type 2 / activated alumina	440 / 130
L 5000 V	Activated carbon type 2 / activated alumina	530 / 170
L 6000 V	Activated carbon type 2 / activated alumina	635 / 200
L 7000 V	Activated carbon type 2 / activated alumina	740 / 240
L 8200 V	Activated carbon type 2 / activated alumina	870 / 290



### Adsorbent!

The activated carbon used must be supplied to proper disposal. The local regulations need to be observed.

### Waste code according to the EWC

**Waste code**

06 13 02

**Waste designation**

Used activated carbon

## List of spare parts

---

### 18 List of spare parts

In a dry condition, activated carbon is significantly more absorptive regarding hydrocarbons and other air pollutants as in a wet condition. Therefore, the design point for the dimensioning of activated-carbon adsorbers lies at a relative humidity of 30% at **BEKO TECHNOLOGIES**.

In order to make activated carbon work well, new activated carbon or activated carbon used for the filling of the activated-carbon adsorber during maintenance works should be in a very dry condition.

In order to have, as soon as possible, a fully absorptive activated-carbon adsorber again during maintenance works, **BEKO TECHNOLOGIES** offers the supply of predried activated carbon.

We recommend checking the compressed-air distributors, which are installed between the upper and lower girth flanges and the pipe, every 10,000 operating hours for damage and contamination and to replace them, if required.

Type CLEARPOINT® V	Order no. Activated carbon predried	Order no. Activated carbon undried	Order no. Compressed-air distributor 2x each
L 1000 V	4024567	4024610	4019831
L 1250 V	4024568	4024611	4019831
L 1550 V	4024569	4024612	4019831
L 1700 V	4024570	4024613	4019831
L 2000 V	4024571	4024614	4019810
L 2300 V	4024572	4024615	4019810
L 2600 V	4024573	4024616	4019810
L 2900 V	4024574	4024617	4019810
L 3400 V	4024575	4024618	4019810
L 4200 V	4024576	4024619	4019813
L 5000 V	4024577	4024620	4019813
L 6000 V	4024578	4024621	4019813
L 7000 V	4024579	4024622	4019813
L 8200 V	4024580	4024623	4019813
Ersatzröhrchen für Ölprüfindikator	Bestellnummer 4005900 für alle Größen		

19 EC Declaration of Conformity

BEKO TECHNOLOGIES GMBH  
 Im Taubental 7  
 D-41468 Neuss

Tel.: +49 (0) 2131-988-0  
 Fax: +49 (0) 2131-988-900  
 Mail: info@beko-technologies.com



**EU-Konformitätserklärung**

Wir erklären hiermit, dass die nachfolgend bezeichneten Produkte den Anforderungen der einschlägigen Richtlinien und technischen Normen entsprechen. Diese Erklärung bezieht sich nur auf die Produkte in dem Zustand, in dem sie von uns in Verkehr gebracht wurden. Nicht vom Hersteller angebrachte Teile und/oder nachträglich vorgenommene Eingriffe bleiben unberücksichtigt.

Die alleinige Verantwortung für die Ausstellung dieser Konformitätserklärung trägt der Hersteller.

Anlagen Benennung : **CLEARPOINT L1000-8200 V/VH/VWM**  
 Serien Nummer : **fortlaufend – siehe Typenschild**

**Druckgeräterichtlinie 2014/68/EU**

Angewandte Normen und technische Spezifikationen: AD2000  
 Angewandtes Konformitätsverfahren: Kategorie IV Modul H1  
 Einstufung Fluidgruppe gem. PED 2014/68/EU: 2  
 Benannte Stelle: Lloyd's Register QA GmbH, Hamburg  
 Nummer der Entwurfsprüfbescheinigung: DTM 1022018  
 Anbringung der CE-Kennzeichnung: **CE 0525**

Die Baugruppe mit der oben genannten Seriennummer besteht aus folgenden drucktragenden Komponenten:

Benennung	Betriebsdruck [bar]	Kategorie	Modul	Fabrik Nummer
B1: DN450...DN1300	11	IV	B+D	s. Typenschild
Rohrleitung L1000...2000 V/VH/VWM	11	Art.4, Abs.3	--	---
Rohrleitung L2300...8200 V/VH/VWM	11	I	A	s. Typenschild

Bemerkungen:

Neuss, 09.06.2016

BEKO TECHNOLOGIES GMBH

*(Signature)*  
 i.V. Stefan Mütter  
 Abteilungsleiter PKS

Dokument: Konfi\_CP L1000-8200V\_Rev\_0\_ab 19-07-2016\_DE.docx

# EC Declaration of Conformity

BEKO TECHNOLOGIES GMBH  
 Im Taubental 7  
 D-41468 Neuss

Tel.: +49 (0) 2131-988-0  
 Fax: +49 (0) 2131-988-900  
 Mail: info@beko-technologies.com



## EC Declaration of Conformity

We hereby declare that the products indicated hereafter comply with the stipulations of the relevant directives and technical standards. This declaration only refers to products in the condition in which they have been placed into circulation. Parts which have not been installed by the manufacturer and/or modifications which have been implemented subsequently remain unconsidered.

This Declaration of Conformity has been issued by the manufacturer.

Designation : **CLEARPOINT L1000-8200 V/VH/VWM**  
 Serial number : **consecutive – see nameplate**

### Pressure Equipment Directive 2014/68/EU

Applied standards and technical specifications: AD2000  
 Applied conformity procedure: Category IV Module H1  
 Fluid group class according to PED 2014/68/EU: 2  
 Notified Body : Lloyd's Register QA GmbH, Hamburg  
 Design approval number: DTM 1022018  
 Application of CE mark: **CE 0525**  
 Applied standards and technical specifications: DIN EN ISO12100:2010

The assembly with the above serial number consists of the following pressurised components:

Designation	Operating pressure [bar]	Category	Module	Factory number
B1: DN450...DN1300	11	IV	B+D	see nameplate
Piping system	11	Art.4, Par.3	---	---
Piping system	11	I	A	see nameplate

Notes:

Neuss, 09/06/2016

BEKO TECHNOLOGIES GMBH

i.V. Stefan Mütter  
 Head of department PKS







<p><b>BEKO TECHNOLOGIES GmbH</b></p> <p>Im Taubental 7 D - 41468 Neuss Tel. +49 2131 988 0 Fax +49 2131 988 900 info@beko-technologies.com service-eu@beko-technologies.com</p> <p style="text-align: right;"><b>DE</b></p>	<p><b>BEKO TECHNOLOGIES LTD.</b></p> <p>Unit 11-12 Moons Park Burnt Meadow Road North Moons Moat Redditch, Worcs, B98 9PA Tel. +44 1527 575 778 info@beko-technologies.co.uk</p> <p style="text-align: right;"><b>GB</b></p>	<p><b>BEKO TECHNOLOGIES S.à.r.l.</b></p> <p>Zone Industrielle 1 Rue des Frères Rémy F - 57200 Sarreguemines Tél. +33 387 283 800 info@beko-technologies.fr service@beko-technologies.fr</p> <p style="text-align: right;"><b>FR</b></p>
<p><b>BEKO TECHNOLOGIES B.V.</b></p> <p>Veenen 12 NL - 4703 RB Roosendaal Tel. +31 165 320 300 benelux@beko-technologies.com service-bnl@beko-technologies.com</p> <p style="text-align: right;"><b>NL</b></p>	<p><b>BEKO TECHNOLOGIES (Shanghai) Co. Ltd.</b></p> <p>Rm.715 Building C, VANTONE Center No.333 Suhong Rd.Minhang District 201106 Shanghai Tel. +86 (21) 50815885 info.cn@beko-technologies.cn service1@beko.cn</p> <p style="text-align: right;"><b>CN</b></p>	<p><b>BEKO TECHNOLOGIES s.r.o.</b></p> <p>Na Pankraci 58 CZ - 140 00 Praha 4 Tel. +420 24 14 14 717 / +420 24 14 09 333 info@beko-technologies.cz</p> <p style="text-align: right;"><b>CZ</b></p>
<p><b>BEKO Tecnológica España S.L.</b></p> <p>Torruella i Urpina 37-42, nave 6 E - 08758 Cervell6 Tel. +34 93 632 76 68 Mobil +34 610 780 639 info.es@beko-technologies.es</p> <p style="text-align: right;"><b>ES</b></p>	<p><b>BEKO TECHNOLOGIES LIMITED</b></p> <p>Room 2608B, Skyline Tower, No. 39 Wang Kwong Road Kwloon Bay Kwloon, Hong Kong Tel. +852 2321 0192 Raymond.Low@beko-technologies.com</p> <p style="text-align: right;"><b>HK</b></p>	<p><b>BEKO TECHNOLOGIES INDIA Pvt. Ltd.</b></p> <p>Plot No.43/1 CIEEP Gandhi Nagar Balanagar Hyderabad IN - 500 037 Tel. +91 40 23080275 / +91 40 23081107 Madhusudan.Masur@bekoindia.com service@bekoindia.com</p> <p style="text-align: right;"><b>IN</b></p>
<p><b>BEKO TECHNOLOGIES S.r.l</b></p> <p>Via Peano 86/88 I - 10040 Leini (TO) Tel. +39 011 4500 576 Fax +39 0114 500 578 info.it@beko-technologies.com service.it@beko-technologies.com</p> <p style="text-align: right;"><b>IT</b></p>	<p><b>BEKO TECHNOLOGIES K.K</b></p> <p>KEIHIN THINK Building 8 Floor 1-1. Minamiwatarida-machi Kawasaki-ku, Kawasaki-shi JP - 210-0855 Tel. +81 44 328 76 01 info@beko-technologies.jp</p> <p style="text-align: right;"><b>JP</b></p>	<p><b>BEKO TECHNOLOGIES Sp. z o.o.</b></p> <p>ul. Pańska 73 PL - 00-834 Warszawa Tel. +48 22 314 75 40 info.pl@beko-technologies.pl</p> <p style="text-align: right;"><b>PL</b></p>
<p><b>BEKO TECHNOLOGIES S. de R.L. de C.</b></p> <p>BEKO Technologies, S de R.L. de C.V. Blvd. Vito Alessio Robles 4602 Bodega 10 Zona Industrial Saltillo, Coahuila, 25107 Mexico Tel. +52(844) 218-1979 informacion@beko-technologies.com</p> <p style="text-align: right;"><b>MX</b></p>	<p><b>BEKO TECHNOLOGIES CORP.</b></p> <p>900 Great Southwest Pkwy SW US - Atlanta, GA 30336 Tel. +1 404 924-6900 Fax +1 (404) 629-6666 beko@bekousa.com</p> <p style="text-align: right;"><b>US</b></p>	

[www.beko-technologies.com](http://www.beko-technologies.com)



Translation of the original operating instructions.  
Original operating instructions in German.